

Available models

- 250, 500, 1000 liters in both single shell and insulated version
- Vertical insulated tanks in 250 and 500 liters

Benefits

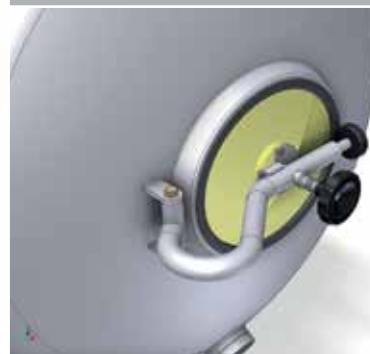
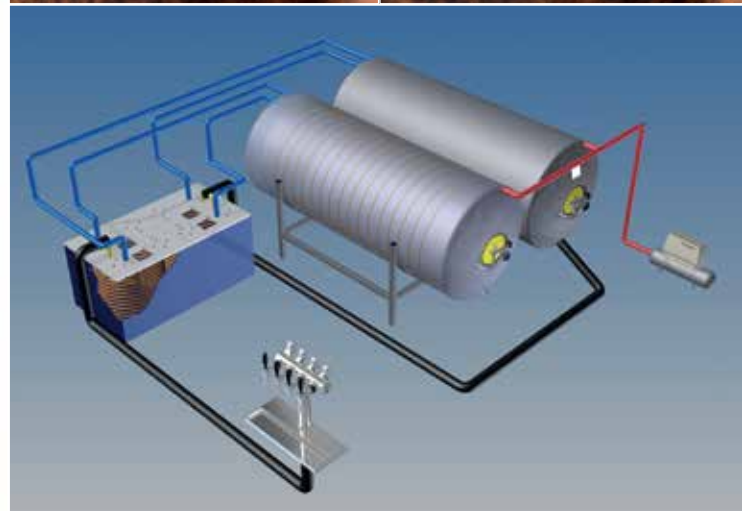
- Longer shelf life
- No keg handling
- No CO₂ needed
- The freshest beer possible

Certificates/standards

- ISO 9001
- Achilles JQS
- PED D, H, H1
- ASME U, U2 & R
- SQL
- EN3834-2
- BPE
- CRN
- NORSOK
- MID

Design codes

- EN-13445
- RToD [Stoomwezen]
- API-560, 620, 650
- EN 14015
- ASME SEC. VIII Div. 1,2
- CODAP
- AD2000
- PD-5500
- KIWA

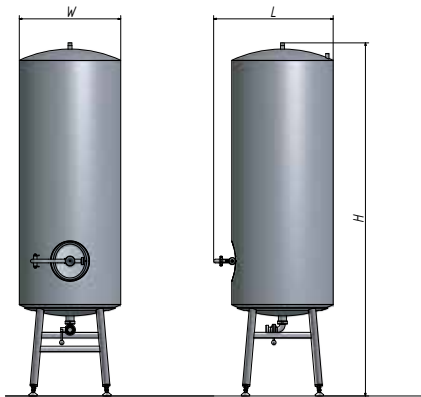
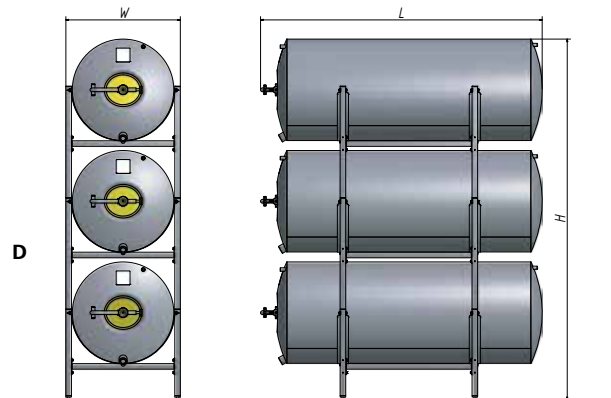
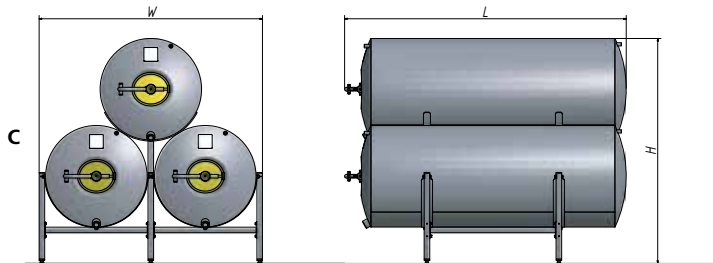
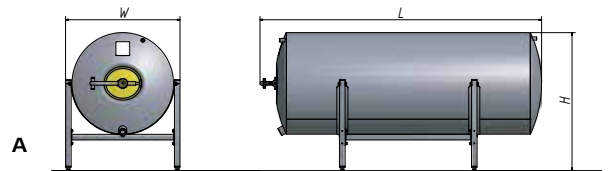
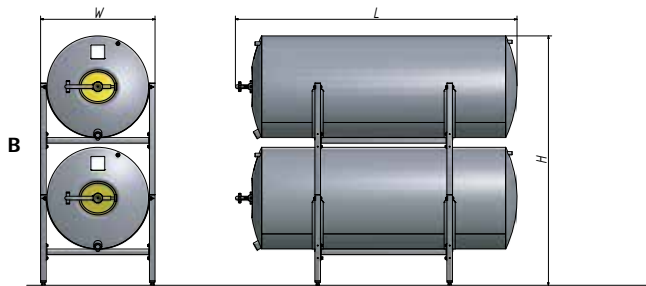


The FIB tankbeer all-in concept

A tankbeer installation, is a set up of at least two tanks with liners inside (bag-in-tank system), a cooler, a compressor and taps. The brewery or brewhouse delivers/ transports the fresh produced cold beer to the tankbeer installation. Once the tanks are filled up, you can tap your cold fresh beer instantly, without additional CO₂. Its the freshest beer possible, straight from the brewhouse.

INSULATED TANK DIMENSIONS					
Set up	Contents liters	Ø tank in mm	Width (W) in mm	Height (H) in mm	Length (L) in mm
A	250	730	824	993	1163
	500	730	824	993	2028
	500	860	954	1123	1419
	1000	860	954	1123	2408
B	250	730	824	1795	1163
	500	730	824	1795	2028
	500	860	954	2055	1419
	1000	860	954	2055	2408
C	250	730	1608	1620	1163
	500	730	1608	1620	2028
	500	860	1868	1862	1419
	1000	860	1868	1862	2408
D	250	730	824	2597	1163
	500	730	824	2597	2028
	500	860	954	2987	1419
	1000	860	954	2987	2408

SINGLE WALL TANK DIMENSIONS					
Set up	Contents liters	Ø tank in mm	Width (W) in mm	Height (H) in mm	Length (L) in mm
A	250	650	744	913	1109
	500	650	744	913	1974
	500	790	884	1053	1362
	1000	790	884	1053	2321
B	250	650	744	1635	1109
	500	650	744	1635	1974
	500	790	884	1915	1362
	1000	790	884	1915	2321
C	250	650	1448	1471	1109
	500	650	1448	1471	1974
	500	790	1728	1731	1362
	1000	790	1728	1731	2321
D	250	650	744	2336	1109
	500	650	744	2336	1974
	500	790	884	2777	1362
	1000	790	884	2777	2321



INSULATED VERTICAL TANK DIMENSIONS				
Contents liters	Diameter tank in mm	Width (W) in mm	Height (H) in mm	Length/Depth (L) in mm
250	730	730	1606	860
500	730	730	2541	860

Technical specifications

Material: Stainless steel, AISI 304 (DIN 1.4301)
 Insulation: 40 mm polyurethane foam
 Connection: 5/8" Cooling, Air 3/8"
 Frame: see drawing